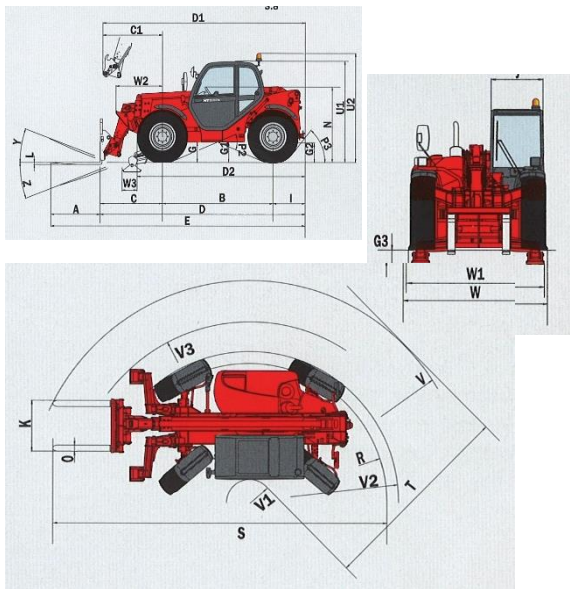
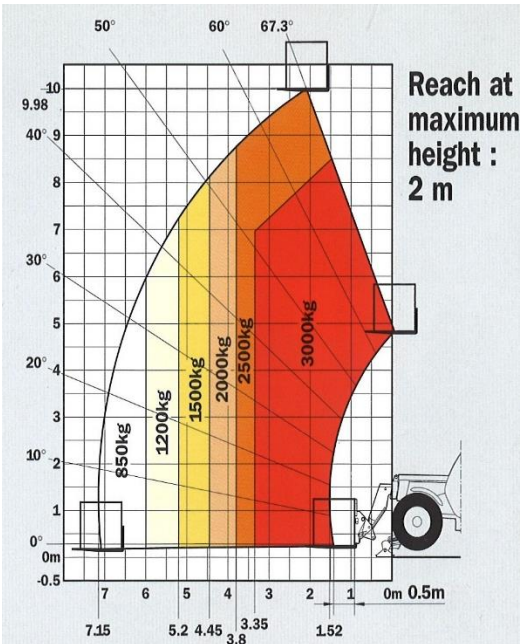


# MANITOU MT 1030S



	mm
A	1200
B	2690
C	1513
C1	1450
D	4988
D1	4935
D2	4070
E	6198
F	1846
G	460
G1	440
G2	445
G3	220
I	795
J	865
K	1040
L	45
N	1690
O	125
P2	44°
P3	53°
R	3545
S	7808
T	3670
U1	2300
U2	2550
V	4950
V1	1280
V2	3750
V3	4200
W	2261
W1	2210
W2	1132
W3	340
Y	12°
Z	114°

### MT 1030 S

- Lifting capacity** .....3000 kg  
at 500 mm from forks heels.  
Tipping load at maximum reach.....1160 kg  
Tear at force with toothed digging bucket (Iso 8313 - 1986).....5330 daN
- Lifting height** .....9.98 m  
**Times : Unladen/loaded (in s)**  
Lifting.....6.7/9  
Lowering.....5.2/5.4  
Simultaneous extension 1<sup>st</sup> and 2<sup>nd</sup> booms.....13.8/14.2  
Simultaneous retraction 1<sup>st</sup> and 2<sup>nd</sup> booms .....8.6/7.3  
Time unladen (in s)  
Crowding.....3  
Dumping .....2.5
- Tyres**  
15.5/80 - 24 12 PR
- Forks (mm)**  
Length .....1200  
Width x thickness .....125 X 45  
Maximum distance between forks.....1040  
Carriage rotation .....126°
- Hydraulically operated brakes with oil-immersed muldidiscs on both axles**
- PERKINS Engine**  
Type .....1104C-44  
Capacity .....4 cyl. 4400 cm<sup>3</sup>  
Power (ISO 14396) : .....82 HP/61.5 kw  
Maximum torque : .....302 Nm at 1400 rpm  
Direct injection  
Water cooling
- Transmission** .....Torque Converter  
Electro - Hydraulic reversing shift  
4 gears forward and reverse  
Maximum travel speed .....25 km/h
- Hydraulics**  
Lifting/tilting pump  
gear type : .....250 bars /105 l/mn  
Flow divider with priority to steering and brakes.
- Capacities**  
Cooling system .....24.5 l.  
Engine oil .....10.5 l.  
Hydraulic oil .....125 l.  
Transmission oil.....15.5 l.  
Fuel tank.....120 l.
- Weight unladen (with forks)** .....7470 kg  
**Overall width** .....2.26 m  
**Overall height** .....2.30 m  
**Turning radius (outside wheels)** .....3.75 m  
**Length up to carriage** .....4.98 m  
**Ground clearance** .....0.44 m  
**Drawbar pull** .....7350 daN

- Standard :**
- Beacon
  - Floating forks carriage
  - Attachment hydraulic line
  - Reverse alarm and lights
- Options :**
- Wide range of attachments (buckets, jibs, made to measure attachments)
  - Air conditioning
  - Work lights
  - ...